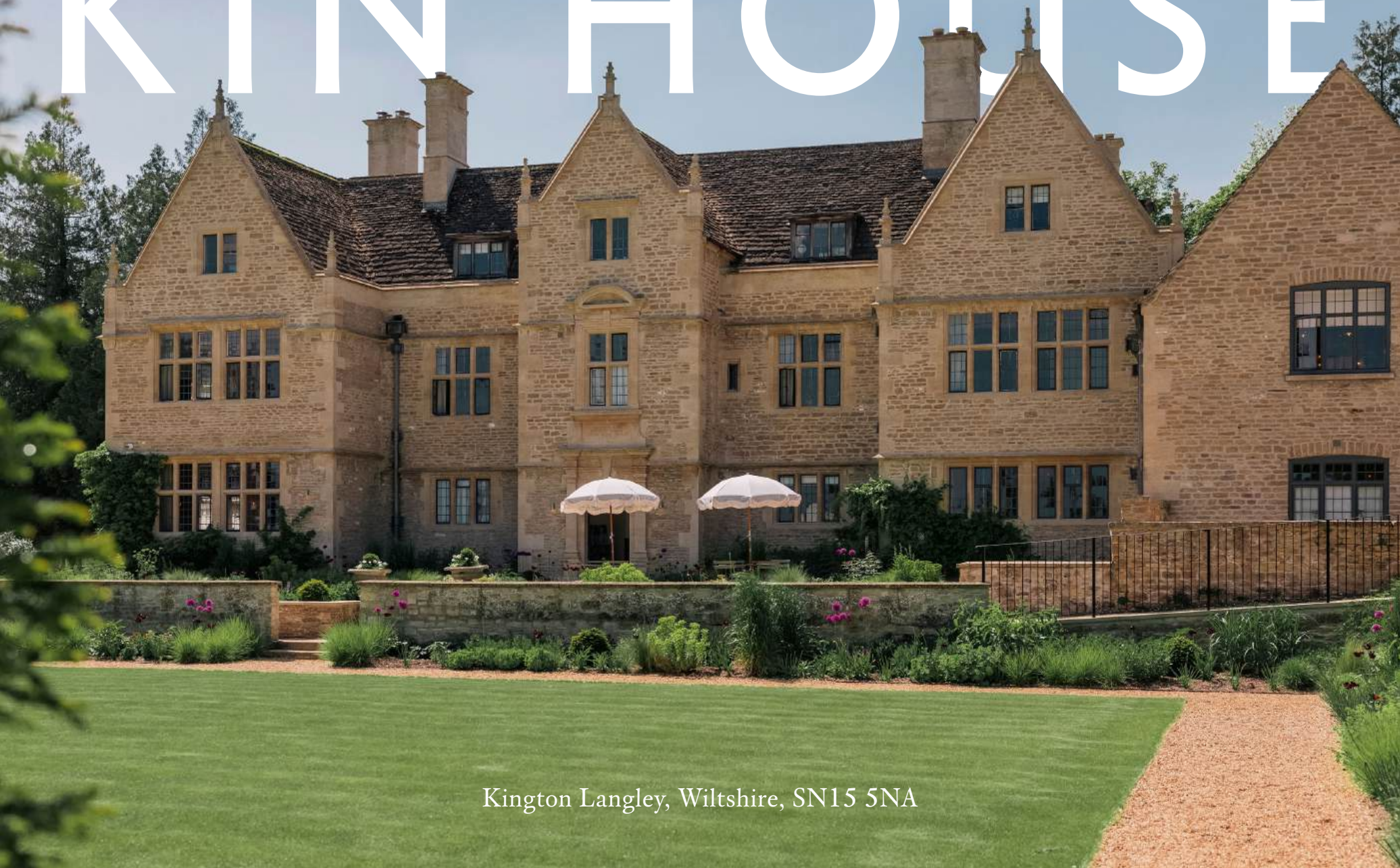


KIN HOUSE



Kington Langley, Wiltshire, SN15 5NA

Fringing the pretty village of Kington Langley in north Wiltshire, Kin House is a Grade II*-listed manor set among walled gardens and private woodland.

Getting married at Kin House is like having your favourite hotel all to yourself. Lazy mornings lingering over a hearty breakfast. A yoga class that leaves you feeling refreshed and rejuvenated for the day ahead. Welcome to your home away from home – with plenty of indulgent extras.

Inside you'll find 12 bedrooms, lounges, a Dressing Room and Barbers, as well as a main hall and bar for celebrations of up to 200. Our Garden House adjoining the original walled garden is the perfect setting for civil ceremonies or post-wedding brunches.

Settle in and think of us your own country house for a day, a weekend, or more.

• • •



SPACES 04-10
CELEBRATE 11-17
SLEEP 18-21
FEAST 22-24
DO 25-27
GALLERY 28-31
INFO 32-38

SPACES

Chapter 01

KIN HOUSE



STUDY

A cosy lounge for relaxing with a coffee, intimate rehearsal dinners by the log fire, or movie nights.



HEARTH ROOM

The heart of the house, featuring an original 18th century fireplace. It's a beautiful spot for civil ceremonies, rehearsal dinners, and is where you'll have breakfast in the morning.







Photo credit: Marta D Weddings

DRAWING ROOM & FITZ BAR

The Drawing Room and adjoining Fitz Bar combine to create the perfect spot for drinks receptions. An original Georgian portico leads to the terrace and lawns so your guests can mill outside on warm days. For larger weddings, the Hearth Room can also be used alongside.





BEAUTY & GROOMING

The Dressing Room is kitted out with hairdryers, state-of-the-art lighting, a shower and changing space. Squashy swivel chairs line a pink marble bar, which has a hair-washing station and oversized mirror for all your sprucing needs. It's the perfect place for getting ready, and we can arrange nail treatments, massages and blow dries.

Tucked away on the top floor you'll find our speakeasy-style Barbers, where you can enjoy a range of relaxing grooming treatments before the main event.





CELEBRATE

Chapter 02

KILVERT HALL & BAR

In a separate wing of the house, our main party space has room for up to 200 to dine and dance. Guests can spill from the marble checkerboard dancefloor to pick up a cocktail from the bar, and there's a stage area hidden behind velvet curtains for band set-ups and live entertainment.







THE GARDEN HOUSE

Inspired by the quintessential British summer house, our Garden House is flooded with natural light, filled with greenery and planting — including an ancient fig tree — and even a decorative terracotta-pot alcove made by our shell grotto artist, Mel Campion.

It can fit up to 200 guests for drinks receptions and civil ceremonies, or it can be used as a dining space for rehearsal dinners and brunches. Large vaulted doors open up into the walled garden, so drinks receptions can also take place outside.



The Garden House will also provide a space for creative workshops throughout the year which are complimentary for Kin House clients.





SLEEP

Chapter 03

SLEEP

Our 12 bedrooms have everything you need for a great night's sleep – think big beds and fluffy pillows aplenty – plus all the little extras such as cosy robes and help-yourself mini bars. Each room has its own bathroom with a rainforest shower, and some come with bathtubs big enough for two.









FEAST

Chapter 04

FEAST

Our food philosophy is simple: delicious ingredients and unfussy cooking that celebrates the joy of eating. From help-yourself mini bars in our bedrooms, to comforting cooked breakfasts and woodland feasts, you won't go hungry while you're with us. Please get in touch for more information on menus and pricing.



SAMPLE MENU

STARTERS

Chicken and 'nduja terrine, pickled vegetables, baby leaves, sourdough

Confit duck, grilled purple sprouting, peanut, blood orange

Chargrilled Dorset squid, almond, lime salsa, herbs

Burrata and grilled nectarine, truffle honey, dukkah, fig leaf oil

Heritage tomato and pickled chickpeas, avocado, herby yoghurt, rye

MAINS

Wiltshire salt-crusted pork belly, crackling, smoked bacon sauce, crispy sage

Stone bass, malted macadamia crust, beurre blanc, lilliput capers

Herb-roasted chicken, blackened lemon, fried thyme, jus

Wiltshire ale-braised Jacob's ladder, charred shallot, chervil, ale sauce

King oyster mushrooms, artichoke purée, whipped goat's curd, truffle, hazelnut

Miso aubergine, rocket salsa, herby yoghurt

PUDDINGS

Strawberry and clotted cream cheesecake, torn scone, balsamic strawberries, clotted cream ice cream

Chelsea tart, dulce de leche custard, salted caramel ice cream

Banana bundt, miso caramel, chocolate sorbet, popcorn

Lemon cream, hedgerow berries, almond cake, burnt meringue, vanilla ricotta



DO

Chapter 05

OUR GROUNDS

The house is set in 10 acres of gardens and private woodland, featuring a croquet lawn, terraces and sun loungers. In summer we can arrange picnics, woodland lunches, and outdoor dining by the walled garden, with food cooked in front of you in our wood oven.



THINGS TO DO

We can organise a range of activities to keep you busy while you're here. Movie nights, yoga, sound baths, massages, lawn games and foraging walks are just a few of the things we can line up. There's also plenty to do on our doorstep, from horse riding and golf, to wild swimming and shooting. Please ask to see our activities list.





GALLERY

Chapter 06



KIN HOUSE







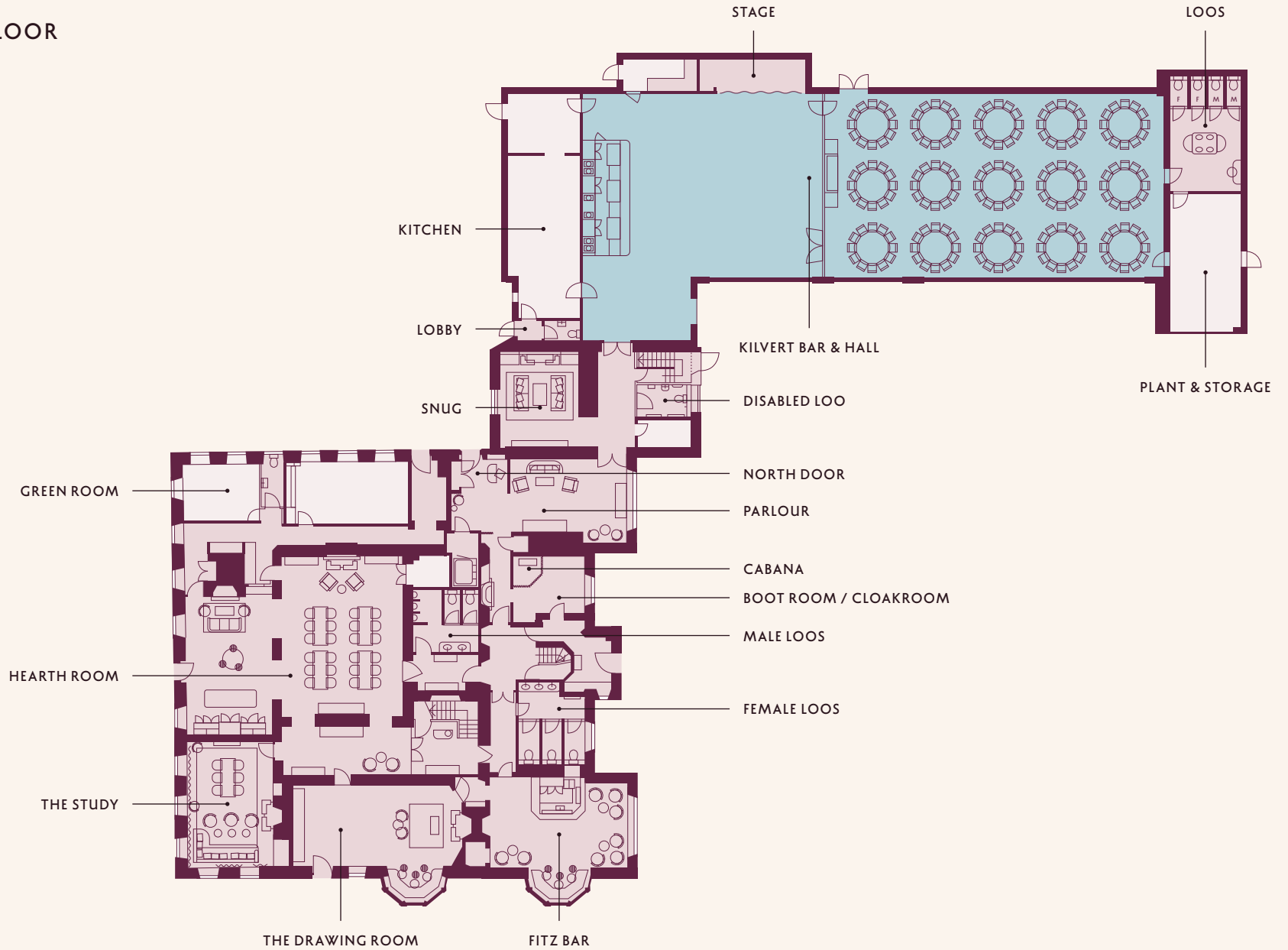
A still life photograph featuring a peach-colored ceramic pitcher filled with purple bell-shaped flowers. Two ripe pomegranates are placed on the white shelf next to the pitcher. In the background, a framed abstract painting is visible on the wall. The entire scene is enclosed within a decorative white border with a repeating wavy pattern.

INFO

Chapter 07

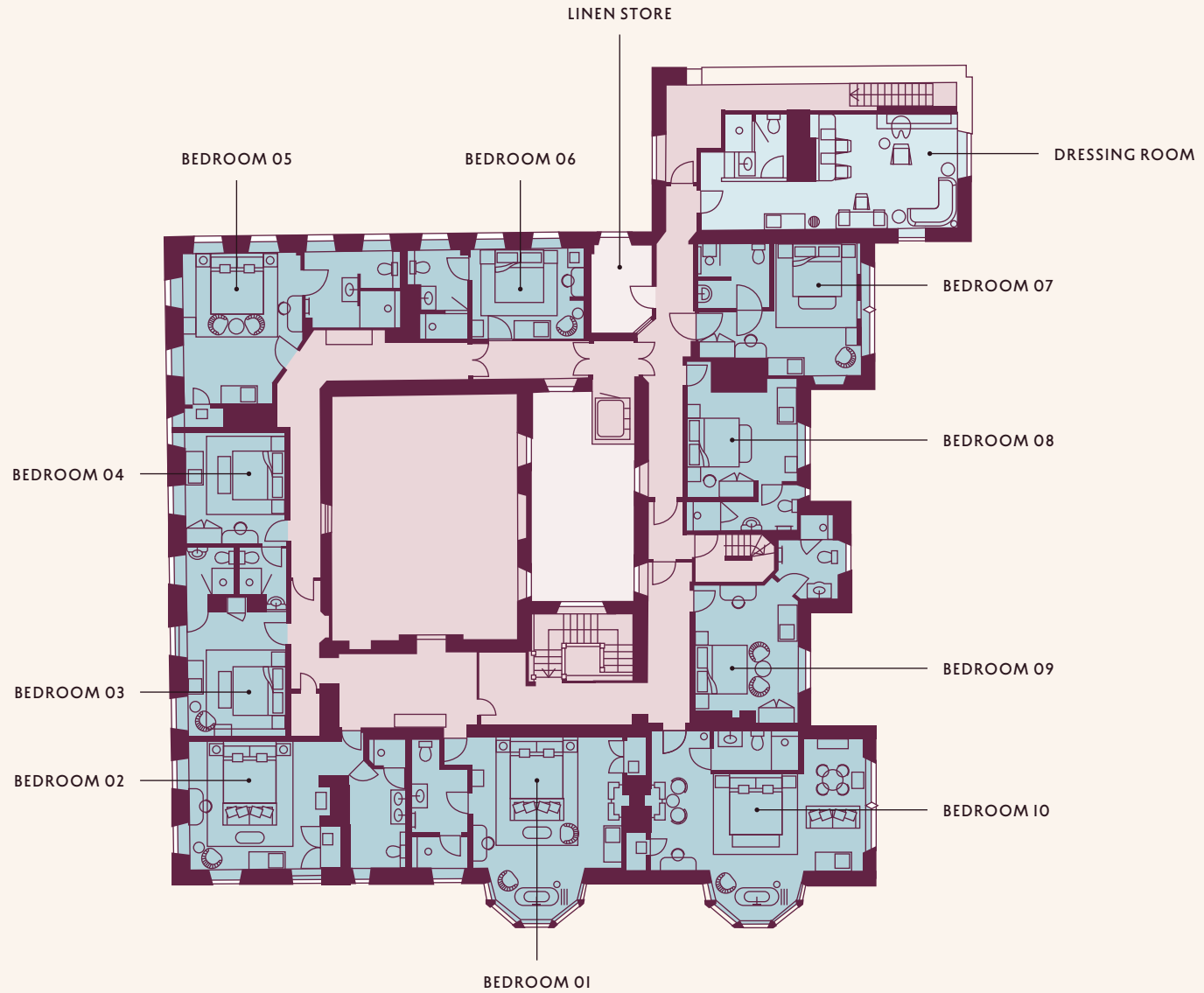
KIN HOUSE

GROUND FLOOR

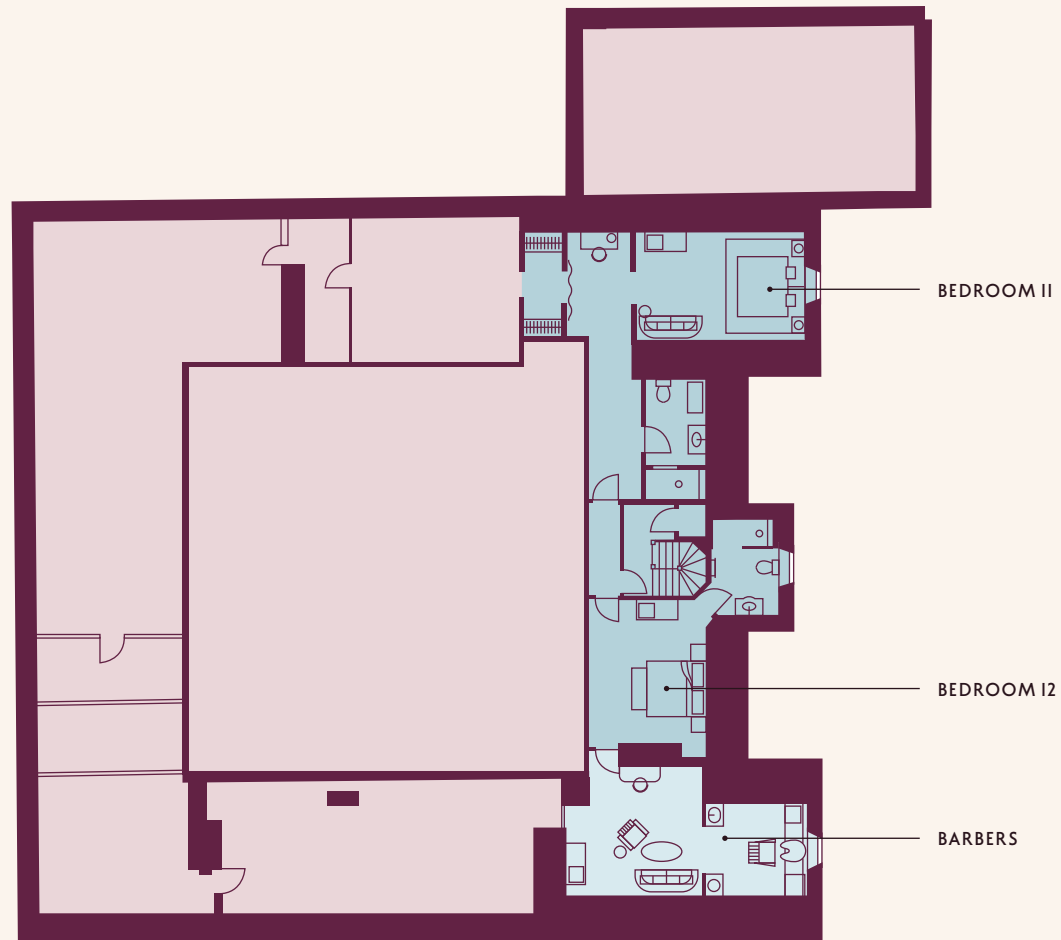


KIN HOUSE

FIRST FLOOR

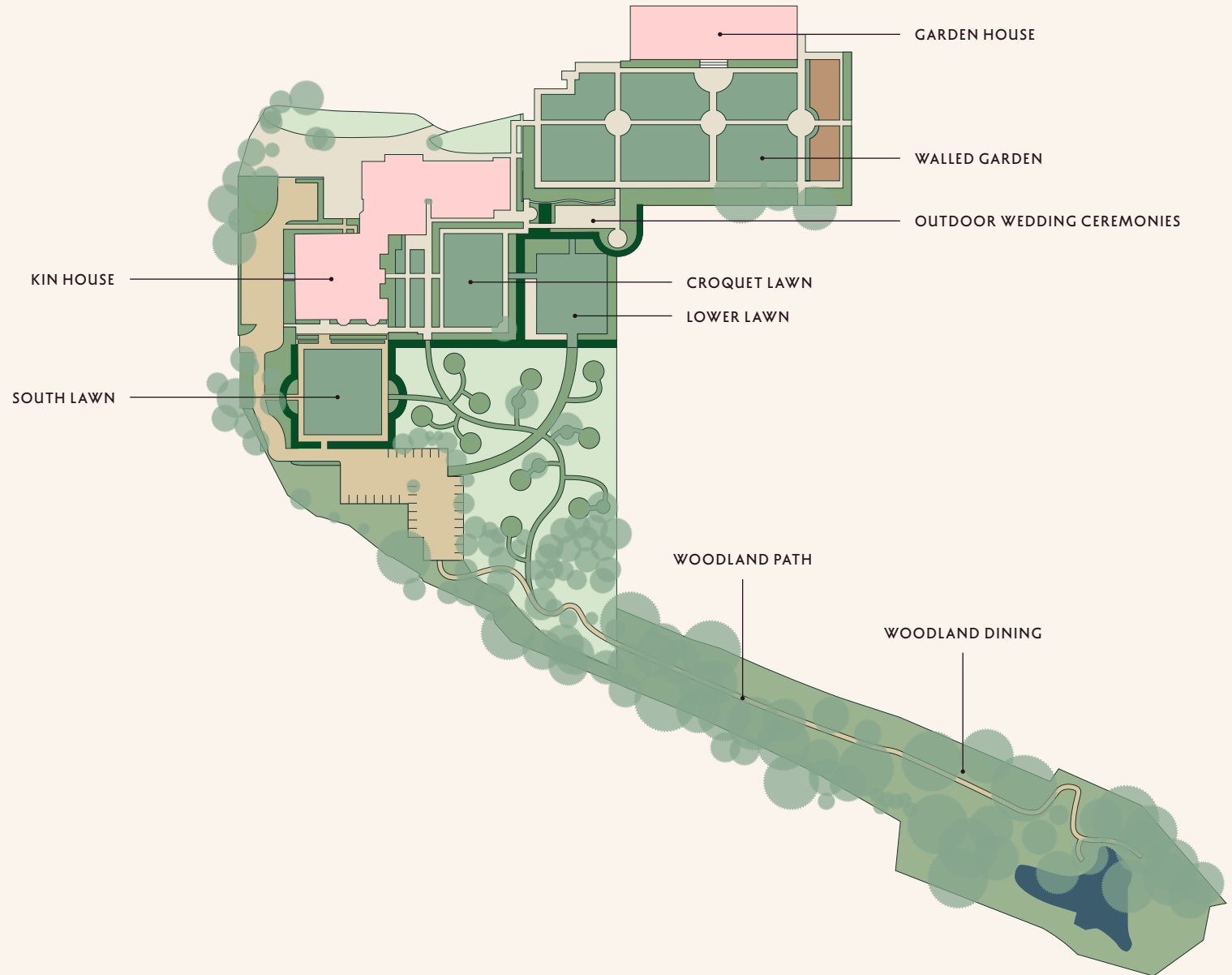


SECOND FLOOR



KIN HOUSE

HOUSE & GROUNDS



OUR WEDDING RATES

2024 / 2025	venue hire starting from
Weekend takeover (<i>two-night stay</i>)	£29,100 £32,750
Saturday wedding (<i>one-night stay</i>)	£25,840 £26,350
Friday wedding (<i>two-night stay</i>)	£25,690 £26,200
Midweek wedding (<i>two-night stay</i>)	£22,440 £22,900
Midweek wedding (<i>one-night stay</i>)	£15,640 £15,950

These rates are inclusive of VAT.
*Rehearsal dinners, brunch and all food and beverage are priced separately.
**Limited availability. Please get in touch if you have a date in mind.

KEY INFORMATION

WEEKEND TAKEOVER

Arrival at 3pm on Friday afternoon before a rehearsal dinner*. Your wedding takes place on Saturday. Check out is on Sunday morning after breakfast. Please enquire if you'd like a later check out, or a three-night stay.

SATURDAY WEDDING

Arrival on Saturday morning; check out at 10.30am on Sunday.
Rates vary depending on requirements — please enquire for more details.

FRIDAY WEDDING**

Arrival on Thursday afternoon before a rehearsal dinner*. Your wedding takes place on Friday, and check out is at 10.30am on Saturday.

MIDWEEK WEDDING**

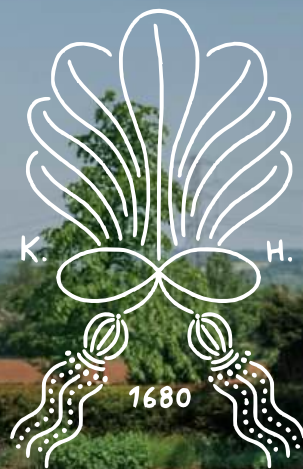
Arrival at 9am on the morning of your wedding; check out at 10.30am the following day for a single-night stay. Two-night stays are also available depending on availability. These rates are available Monday to Thursday.

WANT TO KNOW MORE?

Send us a note or come visit — we'd love to show you around.

We'd be happy to pick you up from the nearest train station which is Chippenham. Just 1hr10 from London Paddington, 25 minutes from Bristol Temple Meads, and 11 minutes from Bath Spa.

Please get in touch with us at hello@kinhouse.co.uk, or give us a call on 01249 479385.



Kington Langley, Wiltshire, SN15 5NA